



#### Full-High Definition video conferencing

Achieve collaboration up to 1920 x 1080 60fps (1080p) even at lower Bandwidths.

#### Unmatched Data collaboration Suite

Share high quality, rich media across with the connected participants along with an exclusive data collaboration suite to make collaboration more interactive & productive.

#### Ubiquitous Video collaboration

Take your Collaboration out of the fixed office spaces. Connect with your teams on the fly from your mobile devices.

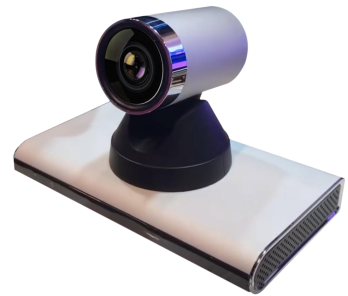
#### High Definition Collaboration

Experience High definition video collaboration with PeopleLink embedded multipoint endpoints, distinct team members can now connect visually with the ease of technology and optimized bandwidth. The Solution seamlessly transforms into a full-fledged Telepresence suite with additional modules.

#### Seamless Interoperability

Connect with ease to the existing standards-based video systems while securing the prior investments made. PeopleLink ensures a seamless integration with the other Hardware based endpoints to conduct conferencing & presentation sharing to ensure much effective visual collaboration or your organization with necessary licenses.

## Experience Real Time in-person Video Collaboration for your Boardrooms with **PeopleLink Impact Pro Endpoint**



Recommended for  
PeopleLink powered Video Collaboration  
Solutions

### Key Points

- Integrated design
- 72.5° wide angle lens.
- 1080p Full HD Video Support.
- 12x optical zoom
- 16x digital zoom
- Built-in VPN
- Network address book
- Wi-Fi (optional)

### Package Includes

- 1 x HD Codec Built-in 12x Zoom HD PTZ Camera
- 1 x Omni-array Microphone
- 1 x Remote Control
- 1 x AC Power Adapter
- 1 x AC Power Cable
- 2 x HDMI cable (1.5m)
- 1 x User Manual

### Bandwidth

64kbps ~ 8Mbps

### Standards & Protocols

ITU-T H.323, IETF SIP

### Video Features

Native 4:3 & 16:9 aspect ratio  
Multiple Screen Layouts

### Video Standards and Protocols

H.261, H.263, H.263+, H.264, H.264HP  
ITU-T H.239, BFCP

### Audio Standards and Protocols

G.711, G.722, G.722.1, G.722.1C, AAC-LD, G.723.1,  
G.726, G.728, SILK

### Video Input

- 1 x Built-in Camera
- 1 x DVI-I
- 2 x USB 2.0

### Video Out

- 2 x HDMI

### Audio Input

- 1 x 3.5mm line-in jack
- 1 x 3.5mm mic-in jack
- 1 x RJ45 digital mic-in jack

### Audio Output

- 1 x 3.5mm line-out jack
- 1 x HDMI audio output

### Video Resolution

- 1080p
- 720p
- 4SIF/4CIF
- SIF/CIF/QSIF/QCIF/SQSIF/SQCIF

### Camera :

- Video output pixels :1080P
- Sensor: 2.07M effective pixel, 1/2.7-inch CMOS
- Zoom:12x optical zoom ,16x digital zoom
- Maximum horizontal angle:72.5°
- Panning/Tilting angle: 44.8° ~ 3.9°
- Automatic White Balance (AWB), Automatic Exposure (AE), Automatic Focus (AF)
- Far-end camera control:support
- A number of preset positions: 8

### Audio :

- Acoustic Echo Cancellation (AEC)
- Automatic Gain Control (AGC) ±6 dB
- Acoustic Noise Suppression (ANS) 12 dB
- Lip synchronization

### Data Collaboration

- Remote Desktop sharing

### Network Standards & Protocols

TCP/IP, DHCP, SSH, HTTP, HTTPS with SSL/TLS, RTP, RTCP, RFC3261, RFC3264, RFC2190, RFC3407, RFC2833, RFC4585(RTP/AVPF), SNTP, ARP

### Network

- 1 x RJ45: 10/100 Base-T
- 1 x Wireless: 802.11a/b/g/n Wi-Fi (optional)

### Security Features

- H.235 (AES) signalling and media stream encryption
- Administrator password, SSH/HTTPS

### Firewall Traversal

H.460.18, H.460.19, H.460.23, H.460.24 firewall traversal, ICE

### Other Protocols

H.221, H.225, H.235, H.241, H.245, H.281, H.350, H.460, T.140, DTMF

### Other Features

- 1000 local address book
- LDAP/Network address book, H.350

### Electrical

- Working voltage: AC 100V ~ 240V, DC 12V
- Working frequency: 50/60Hz
- Power consumption: 24W

### Environmental Specifications

- Operating Temperature: 0°C to 40°C
- Operating Humidity: 10% to 80%
- Non-Operating Temperature: -40° to -70°C
- Non-Operating Humidity (Non-condensing): 0% to 95%
- Peripheral noise: < 46 dBA SPL
- Lowest luminance: 5 lux
- Recommended luminance: > 300 lux

### Physical Dimensions

- Codec dimensions (L x W x H): 258mm x 146mm x 170mm
- Package dimensions (L x W x H): 304mm x 248mm x 257mm
- Net weight: 1.7 kg
- Package Weight: 2.5 kg

### Warranty

Support Level : One-year Warranty with PeopleLink Direct Service Support. For additional / extended Warranty & Support, contact PeopleLink Support Team.

### Ordering Information

PeopleLink Impact Endpoint : PEP-PIS-HXP



#### GLOBAL HEADQUARTERS

Q3-A3, 10th Floor, Cyber Towers, Hitech City,  
Madhapur, Hyderabad - 500 081 (India)

Ph: +91 (40) 66903960  
E-mail: vc@peoplelinkvc.com

**Africa** : +27-10-5001977

**Middle East** : +973-1-6199342

**USA** : +1-321-2163070

**UK** : +44-20-35190197

**Canada** : +1-647-4964195

**Australia** : +61-29-0988367

[www.peoplelinkvc.com](http://www.peoplelinkvc.com)



[www.peoplelinkvc.com/social-presence](http://www.peoplelinkvc.com/social-presence)

Third party trademarks / products mentioned (if any) are the property of their respective owners. The use of the word partner does not imply a partnership / relationship between PeopleLink and any other company. Product Images shown are for Representation purpose, the actual physical products may differ in their appearance.  
PeopleLink Public Document | PeopleLink Unified Communications Pvt. Ltd. | ISO 9001:2015, ISO / IEC 27001:2013 Certified Company.