



PeopleLink DSP CM


[Watch Video](#)

Experience high-quality audio communication with PeopleLink's voice collaboration DSP. With the ease of technology designed for conferencing, you can effortlessly transform your classrooms, training rooms, and boardrooms. The DSP-CM is a high-quality audio solution that incorporates a high signal-to-noise ratio, adaptive echo cancellation, adaptive noise suppression, and intelligent sound mixing. Ceiling microphones are designed to cover meeting spaces, such as training rooms, classrooms, and demo rooms, with discreet and easily accessible ceiling mounting.

Key Features

- HD voice pickup range mic
- The 3rd Generation Auctopus Audio Processing Algorithm
- Efficient Layout
- Compatible with common audio and video software



Recommended for PeopleLink powered Video Collaboration Solutions

General Specifications

Component :

Digital audio processor
 DSP processing bus structure
 USB 2.0 B-type connection
 2 road 3.81mm phoenix interface
 Input and output single adjustment knob
 Suspended spherical microphone

Interface :

USB : USB Type-B
Power : DC 12V
Phoenix interface : 2 road 3.81mm

Power Supply :

Power Supply : Power Adapter
Input : 100-240v, 0.5A, 50/60Hz.
Output: DC 12V,2A

Audio Processor :

Frequency response : 20hz-20khz @+4dBu
Microphone channel: +0/ -2dB
line input channel: +0/-0.5dB.
Light : Work normal , red, green alternatively
 lighting on certification

Audio Features :

Adaptive echo cancellation : Yes
Adaptive noise suppression : Yes
Intelligent remix : Yes

OS Support :

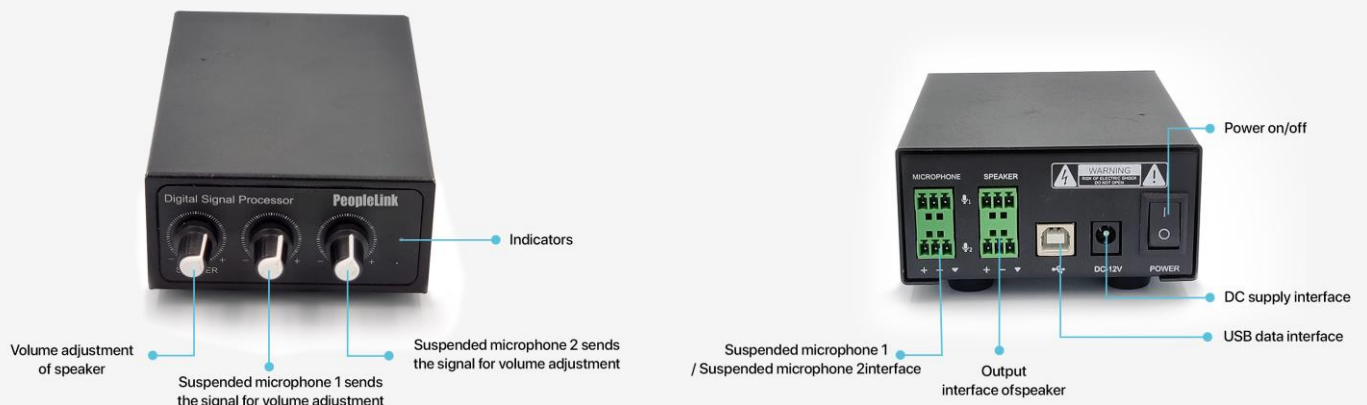
Windows 7 / Windows 10 / Windows XP, Mac OS

Temperature :

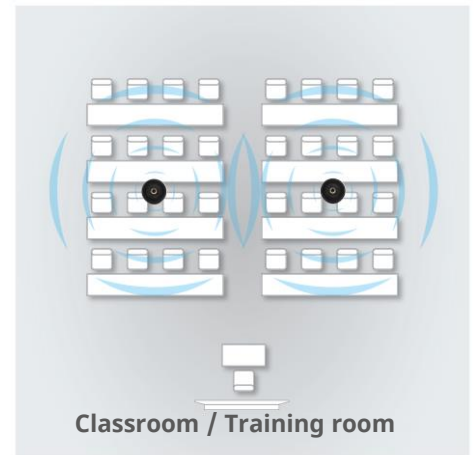
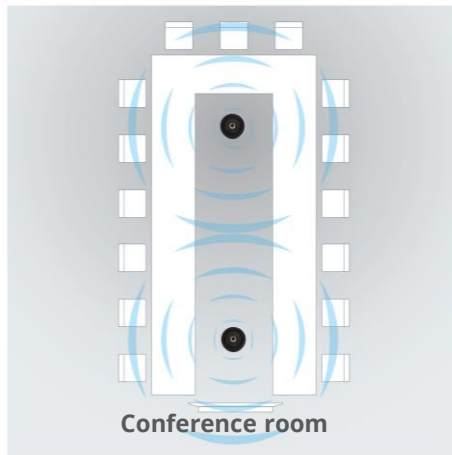
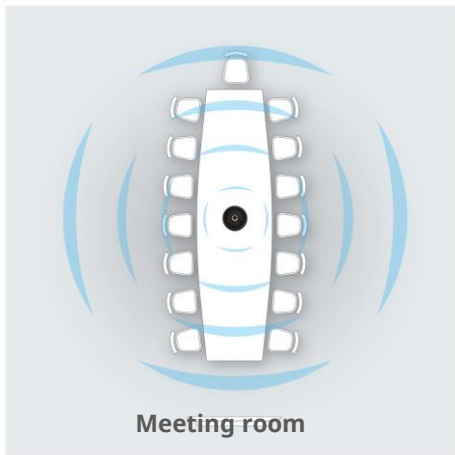
Temperature : 20°~70°
Humidity : 20~90% condensation free
Noise level : <48dB
Storage temperature : 20°~70

Microphone :

Pick up radius : 10m Max
Frequency response : 50hz-20khz
Sensitivity : -47 plus or minus 3dB.
SNR: 75dB

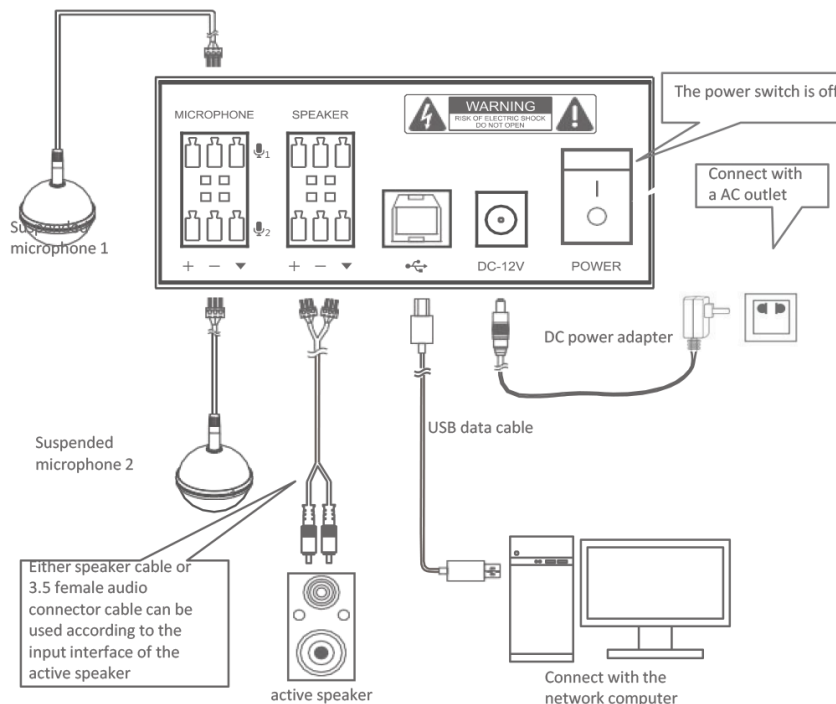


Application Scenarios



Disclaimer:- Room setup diagrams provided for reference only. Actual room setup and size may vary as per requirements.

Connectivity



Ordering Information

PeopleLink DSP CM

: PCU-DSP-CM

LEARN MORE

For more information on DSP CM [Click Here](#)

SALES AND INQUIRIES

Global Headquarters

Q3-A3, 10th Floor Cyber Towers,
HITEC City, Hyderabad,
Telangana 500081, **India**
Phone: +91 9100123013
Email: vc@peoplelinkvc.com

International Contact Numbers

USA: +1 669-696-8383
Australia: +61 370 037070
France: +33 6 80 75 26 42
Middle East: +966 5300 19292
UK: +44 20 4571 5454

UAE: +971 4 3339082
Canada: +1 647-945-7373
Malaysia: +(6)018-2872188
New Zealand: +64-9-802-4666
Africa: +254 722 619 314

Tech Support

Toll Free: 1800 208 3399
customersupport@peoplelinkvc.com